

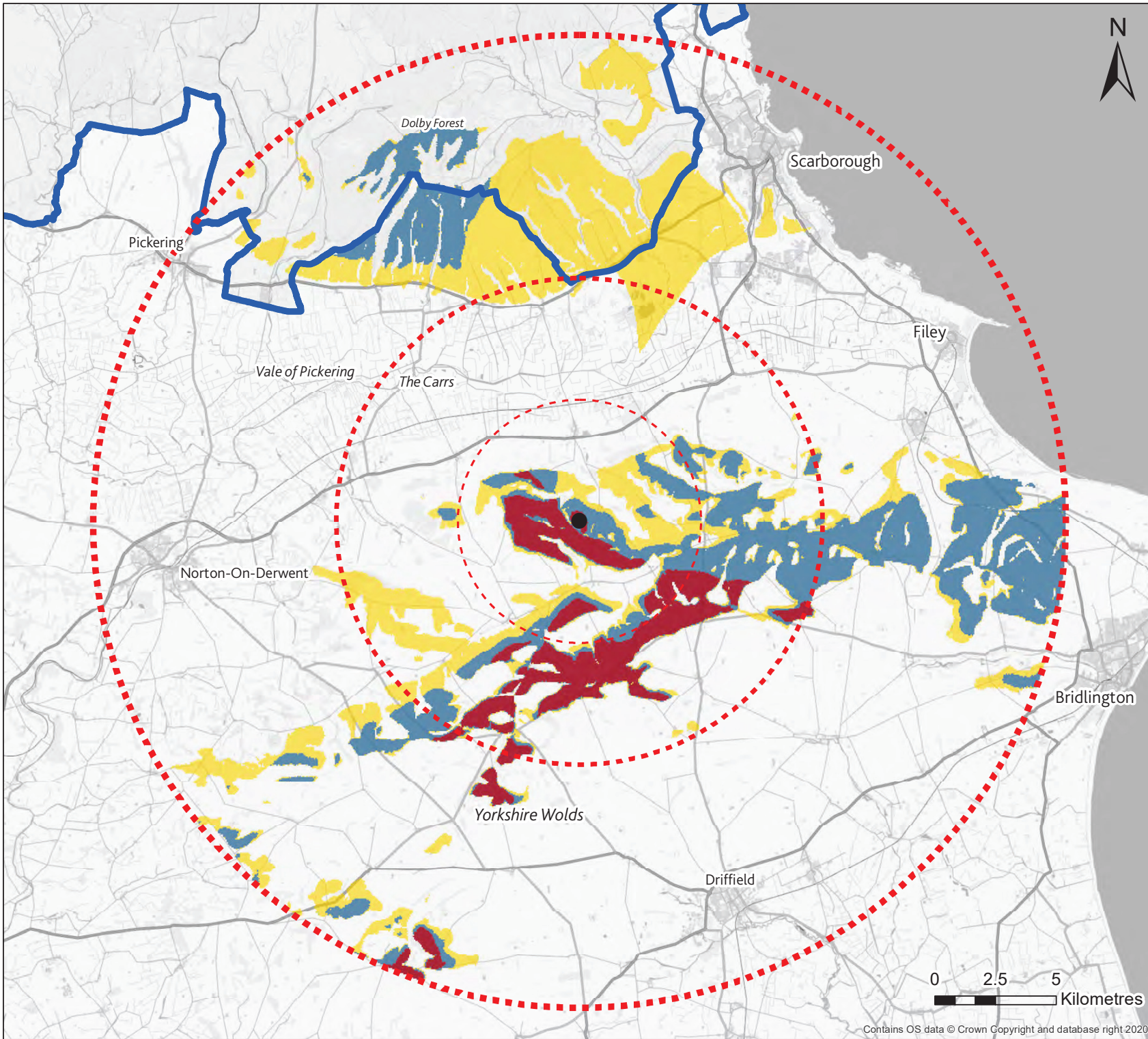


- KEY**
- Viewpoints
 - PROPOSED TURBINE
 - 5KM BUFFER FROM PROPOSED TURBINE

0	16/05/2022	VA	BF	RC	RC
Rev	Date	Description	Drawn	Checked	Approved

GILLESPIES

Client:	BRACKENDALE LIMITED				
Scheme Name:	DUGLEBY WOLD WIND TURBINE VISUAL APPRAISAL				
Title:	FIGURE 2: VIEWPOINT LOCATIONS				
Scale:	1: 50 000	Sheet:	SHEET 1 of 1	Sheet Size:	A3 (297 mm x 420 mm)
Rev:					0



- KEY**
- PROPOSED TURBINE
 - - - 5KM BUFFER FROM PROPOSED TURBINE
 - - - 10KM BUFFER FROM PROPOSED TURBINE
 - - - 20KM BUFFER FROM PROPOSED TURBINE
 - ▭ NORTH YORK MOORS NATIONAL PARK

- ZONE OF THEORETICAL VISIBILITY**
- HUB HEIGHT TO TIP HEIGHT VISIBLE
 - ROTOR DIAMETER VISIBLE
 - MAST AND ROTOR DIAMETER VISIBLE

Notes

Zone of Theoretical Visibility (ZTV) generated using QGIS based on the following:

- OS Terrain 50 DTM
- Proposed Vestas V47 wind turbine with a 40.7m hub height, 23.5m rotor radius, 47m rotor diameter and a height to blade tip of 64.2m
- Proposed wind turbine location of 496099, 473355
- Observer height of 2m

This is a bare earth ZTV and does not account for screening elements such as vegetation or built form.

Rev	Date	Description	Drawn	Checked	Approved
0	16/05/2022	VA	BF	RG	RG

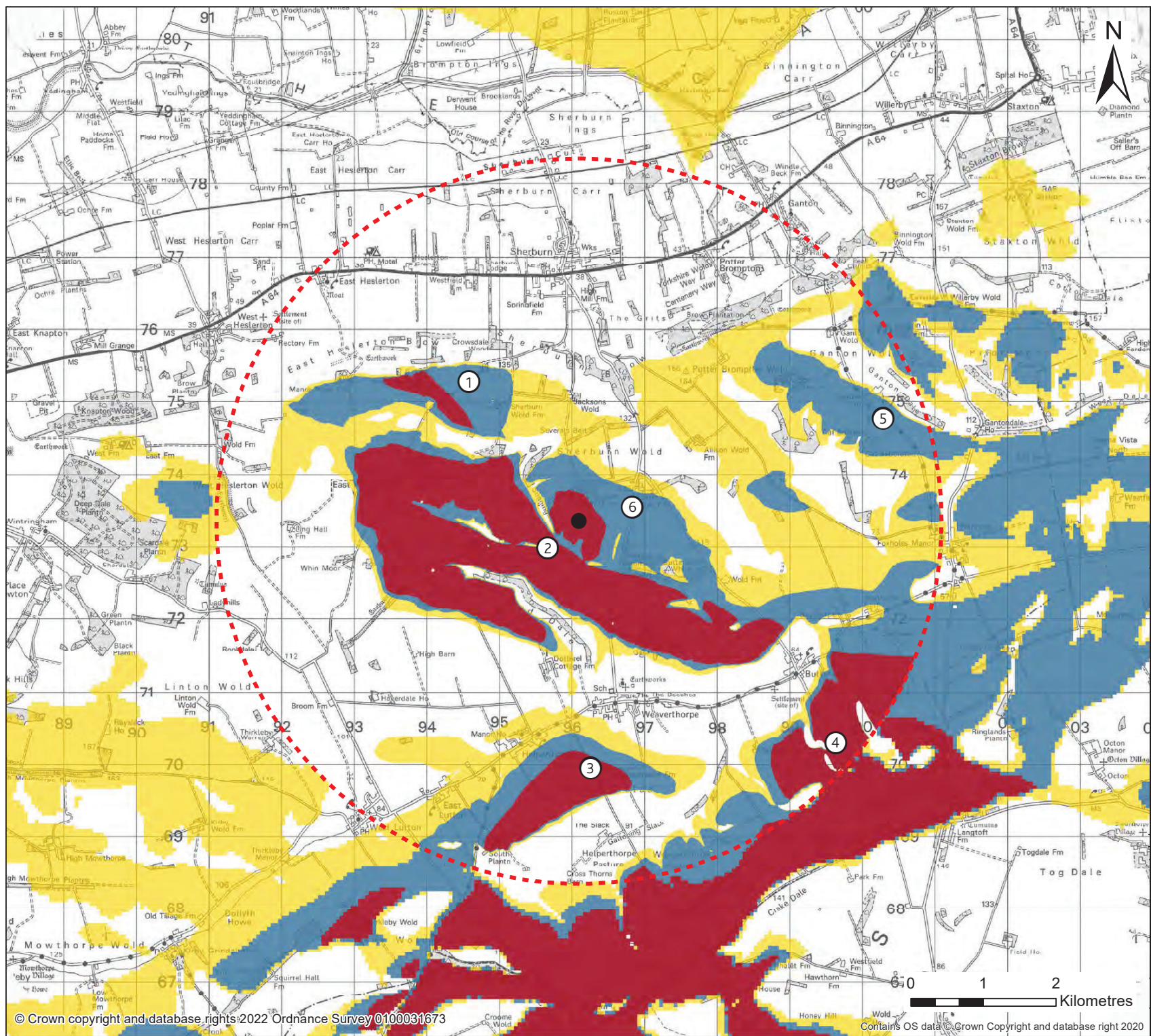
GILLESPIES

Client: BRACKENDALE LIMITED

Scheme Name: DUGGLEBY WOLD WIND TURBINE VISUAL APPRAISAL

Title: FIGURE 3: ZONE OF THEORETICAL VISIBILITY

Scale: 1: 150 000	Sheet: SHEET 1 of 2	Sheet Size: A3 (297 mm x 420 mm)	Rev: 0
-------------------	---------------------	----------------------------------	--------



KEY

- PROPOSED TURBINE
- VIEWPOINTS
- ⋯ 5KM BUFFER FROM PROPOSED TURBINE

ZONE OF THEORETICAL VISIBILITY

- HUB HEIGHT TO TIP HEIGHT VISIBLE
- ROTOR DIAMETER VISIBLE
- MAST AND ROTOR DIAMETER VISIBLE

Notes

Zone of Theoretical Visibility (ZTV) generated using QGIS based on the following:

- Combination of OS Terrain 5 and Terrain 50 DTM (Terrain 5 DTM up to 5km Terrain and 50 DTM between 5km and 20km from the proposed turbine)
- Proposed Vestas V47 wind turbine with a 40.7m hub height, 23.5m rotor radius, 47m rotor diameter and a height to bade tip of 64.2m
- Proposed wind turbine location of 496099, 473355
- Observer height of 2m
- Mast and Rotor Diameter Visible ZTV based on 1 metre above existing ground level of 140.6 AOD, to ensure worst case scenario is considered

This is a bare earth ZTV and does not account for screening elements such as vegetation or built form.

1	17/05/2022	Viewpoint locations updated	BF	RG	RG
0	16/05/2022	VA	BF	RG	RG
Rev	Date	Description	Drawn	Checked	Approved

GILLESPIES

Client:	BRACKENDALE LIMITED				
Scheme Name:	DUGGLEBY WOLD WIND TURBINE VISUAL APPRAISAL				
Title:	FIGURE 3: ZONE OF THEORETICAL VISIBILITY				
Scale:	1: 50 000	Sheet:	SHEET 2 of 2	Sheet Size:	A3 (297 mm x 420 mm)
Rev:					1

GILLESPIES

GILLESPIES LLP
5TH FLOOR
PHOENIX HOUSE
3 SOUTH PARADE
LEEDS
LS1 5QX

T: +44 (0)1132470550
F: +44 (0)1132470660
E: REBECCA.GREATRIX@GILLESPIES.CO.UK
W: WWW.GILLESPIES.CO.UK

LONDON | OXFORD | MANCHESTER | LEEDS | ABU DHABI

GILLESPIES		PROJECT TITLE	DOCUMENT TITLE		CLIENT
		DUGGLEBY WIND TURBINE VISUAL APPRAISAL	APPENDIX A: FIGURES P20992-00-001-GIL-0703		BRACKENDALE LIMITED
REV.	DATE	DETAIL	MADE BY	CHECKED BY	APPROVED BY
00	26.05.22	DRAFT	BF	RG	RG
01	20.06.22	FINAL	BF	RG	RG